



# FY 2025 County Transportation Plan

## Autauga County



Date Approved by the Autauga County Commission: August 13, 2024

Map Index	Project No.	Road Name/Number	Begin		End		Project Details			Total Project Estimated Cost	Estimated Amount Planned To Be Utilized Under Competitive Bid	Estimated Amount Planned To Be Utilized Under Public Works	County Rebuild Alabama Funds or Federal Aid Exchange Funds (List fund type separately for projects involving both CRAFs and FAEFs)	CRAF Amount	FAEF Amount	
			Lat.	Long.	Lat.	Long.	Road Improvement Project	Bridge Improvement Project	Project Length (miles)							Description of Work
										Estimated Beginning Balance			\$1,900,000.00	\$500,000.00		
										Estimated Annual Revenue			\$1,000,000.00	\$400,000.00		
22-1	RA-ACP 01-81-21	CR-19	32.5736	-86.6820	32.6264	-68.6714	X		3.82	FDR, Patch, Level, Resurface, and Traffic Stripe from US-82 to Autauga Northern RRX	\$1,000,000.00		\$1,000,000.00	CRAF/FAEF	\$750,000.00	\$250,000.00
23-1	RA-ACP 01-92-22	CR-20	32.7025	-86.4639	32.6881	-86.4178	X		3.31	Patch, Spot Level, Resurface, & Traffic Stripe from US-143 to CR-68	\$500,000.00		\$500,000.00	CRAF	\$500,000.00	
23-7	RA-ACP 01-98-22	Rose Circle	32.6983	-86.6083	32.6981	-86.6061	X		0.13	Patch and Resurface from CR-21 to End of Pavement	\$30,000.00		\$30,000.00	CRAF	\$30,000.00	
24-1	RA-ACP 01-103-23	CR-68	32.6583	-86.5336	32.6569	-86.4894	X		2.62	Resurface and Traffic Stripe CR-68 from CR-57 to US-31	\$300,000.00		\$300,000.00	CRAF	\$300,000.00	
24-2	RA-ACP 01-104-23	CR-1S	32.4681	-86.8306	32.3833	-86.7958	X		7.64	Patch, Spot Level, Surface Treatment and Traffic Stripe from SR-14 to CR-15	\$450,000.00		\$450,000.00	CRAF	\$450,000.00	
25-1	RA-ACP 01-02-24	Old Ridge Road	32.4931	-86.4536	32.5047	-86.4297	X		1.90	Widen, Spot Level, Resurface & Traffic Stripe from US-31 to 1.9 miles from US-31	\$250,000.00		\$250,000.00	CRAF	\$250,000.00	
25-2	RA-ACP 01-03-24	CR-33	32.4511	-86.7397	32.5217	-86.7017	X		6.42	Patch, Spot Level, & Surface Treatment from SR-14 to CR-19	\$400,000.00		\$400,000.00	CRAF	\$400,000.00	
25-3	RA-ACP 01-04-24	CR-59	32.4903	-86.4786	32.5686	-86.5131	X		6.13	Spot Level, Resurface, & Traffic Stripe from Prattville City Limits to CR-40	\$200,000.00		\$200,000.00	FAEF		\$200,000.00
25-4	RA-ACP 01-05-24	CR-69	32.6092	-86.6706				X	-	Pile Encasement Extensions and Rip-Rap Armoring at BIN #011993	\$150,000.00	\$25,000.00	\$125,000.00	FAEF		\$150,000.00
Totals/Page Totals			Total Miles Addressed by CTP (Total Mileage Does Not Include Bridge Projects)						31.97	Total CTP Estimated Costs	\$3,280,000.00	\$25,000.00	\$3,255,000.00	Total CRAF/FAEF Remaining Estimated	\$220,000.00	\$300,000.00

Note(s): 1) Any amendments to the CTP shall follow the same guidelines and procedures as the original approval process.

2) Map Index represents their fiscal year followed by their map # for said fiscal year. Example: Map 23-6 is Map #6 in the FY 2023 County Transportation Plan

Remarks

Map 22-1, 23-1, 23-7, 24-1, and 24-2 are carry over projects from previous fiscal years

An LRSI grant was awarded for MAP 24-1 for safety widening and resurfacing. Total estimated construction cost is \$650,000.

Map 25-3 is a federal aid project with a total estimated construction cost of \$1,000,000

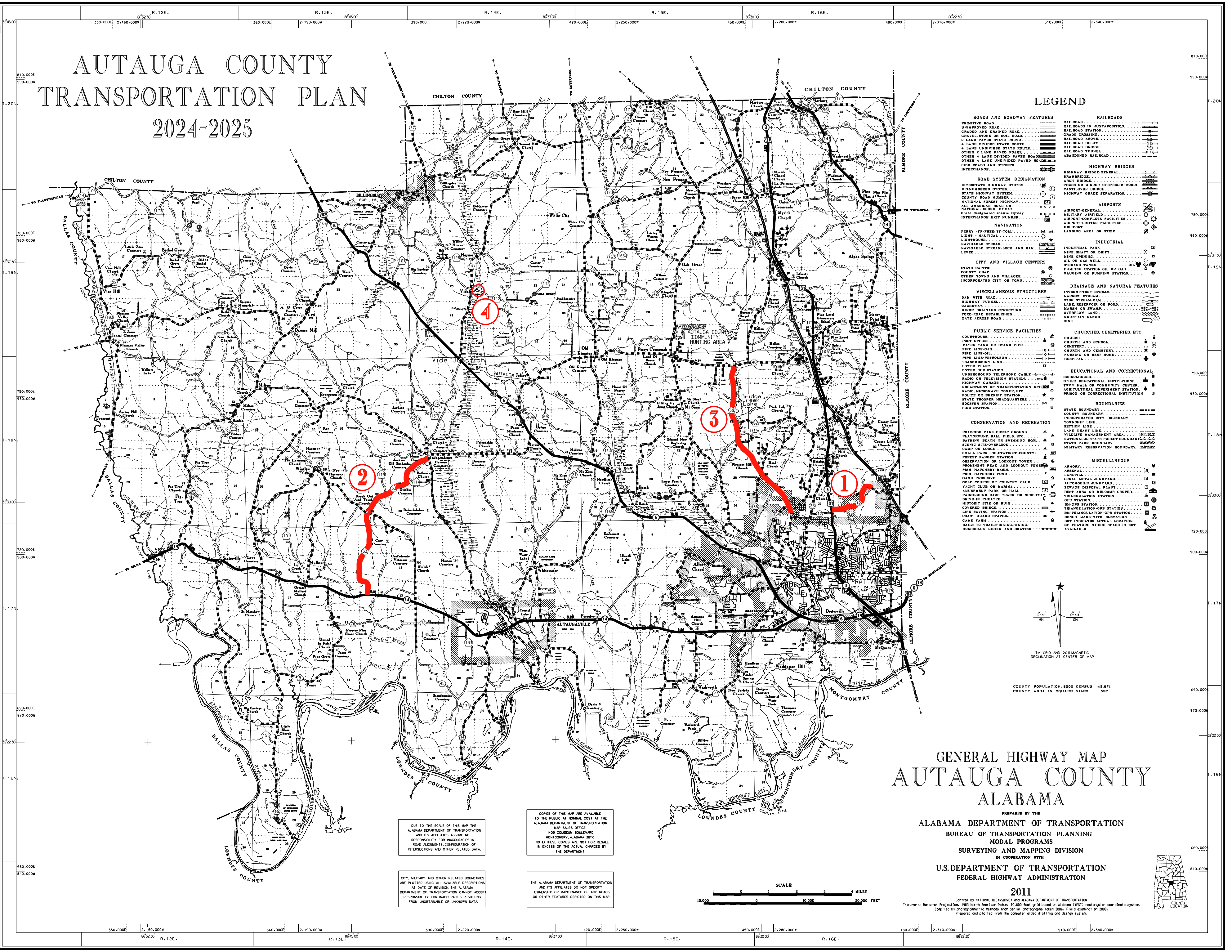
Map 25-1 is a joint project between the City of Prattville and the County. Total Estimated construction cost is \$500,000

Map 25-4 will utilize an annual bid for its completion. This project is expected to take 30 working days to complete. All materials needed for this project will be provided by the County

Map 23-1 & 23-7 will utilize an annual bid for its completion.

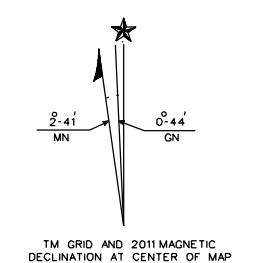
The remaining estimated balance of CRAF and FAEF will be carried over for projects in next fiscal year's CTP, or to cover any overruns will be paid with local funds

# AUTAUGA COUNTY TRANSPORTATION PLAN 2024-2025



## LEGEND

- |   |   |
|---|---|
| <p><b>ROADS AND ROADWAY FEATURES</b></p> <ul style="list-style-type: none"> <li>PRIMITIVE ROAD</li> <li>UNIMPROVED ROAD</li> <li>GRAVEL AND GRAVEL ROAD</li> <li>GRAVEL, STONE OR SOIL ROAD</li> <li>2 LANE PAVED STATE ROUTE</li> <li>4 LANE DIVIDED STATE ROUTE</li> <li>4 LANE UNDIVIDED STATE ROUTE</li> <li>OTHER 2 LANE PAVED ROADS</li> <li>OTHER 4 LANE DIVIDED PAVED ROADS</li> <li>OTHER 4 LANE UNDIVIDED PAVED ROADS</li> <li>SIDE ROAD AND STREET</li> <li>INTERCHANGE</li> </ul> <p><b>ROAD SYSTEM DESIGNATION</b></p> <ul style="list-style-type: none"> <li>INTERSTATE HIGHWAY SYSTEM</li> <li>U.S. NUMBERED SYSTEM</li> <li>STATE HIGHWAY SYSTEM</li> <li>COUNTY ROAD NUMBER</li> <li>NATIONAL FOREST HIGHWAY</li> <li>NATIONAL SCenic BYWAY</li> <li>STATE GARDEN ROUTE BYWAY</li> <li>INTERCHANGE EXT NUMBER</li> </ul> <p><b>NAVIGATION</b></p> <ul style="list-style-type: none"> <li>FERRY (IF FERRY-TOLL)</li> <li>LIGHT NAUTICAL</li> <li>LIKHTHOUSE</li> <li>NAVIGABLE STREAM-LOCK AND DAM</li> <li>LEVEE</li> </ul> <p><b>CITY AND VILLAGE CENTERS</b></p> <ul style="list-style-type: none"> <li>STATE CAPITAL</li> <li>COUNTY SEAT</li> <li>OTHER TOWNS AND VILLAGES</li> <li>INCORPORATED CITY OR TOWN</li> </ul> <p><b>MISCELLANEOUS STRUCTURES</b></p> <ul style="list-style-type: none"> <li>DAM WITH ROAD</li> <li>HIGHWAY TUNNEL</li> <li>CAUSEWAY</li> <li>MINOR DRAINAGE STRUCTURE</li> <li>ROAD ESTABLISHED</li> <li>GATE ACROSS ROAD</li> </ul> <p><b>PUBLIC SERVICE FACILITIES</b></p> <ul style="list-style-type: none"> <li>COURTHOUSE</li> <li>POST OFFICE</li> <li>WATER TANK OR STAND PIPE</li> <li>PIPE LINE-GAS</li> <li>PIPE LINE-OIL</li> <li>PIPE LINE-PETROLEUM</li> <li>TRANSMISSION LINE</li> <li>POWER PLANT</li> <li>POWER SUBSTATION</li> <li>UNDERGROUND TELEPHONE CABLE</li> <li>RADIO OR TELEVISION STATION</li> <li>HIGHWAY GARAGE</li> <li>DEPARTMENT OF TRANSPORTATION OFFICE</li> <li>RADIO, MICROWAVE TOWER, ETC.</li> <li>POLICE OR SHERIFF STATION</li> <li>STATE TROOPER HEADQUARTERS</li> <li>ROOSTER STATION</li> <li>FIRE STATION</li> </ul> <p><b>CONSERVATION AND RECREATION</b></p> <ul style="list-style-type: none"> <li>ROADSIDE PARK-PICNIC GROUNDS</li> <li>PLAYGROUND, BALL FIELD, ETC.</li> <li>BATHING BEACH OR SWIMMING POOL</li> <li>SCENIC SITE-OVERLOOK</li> <li>CAMP OR LODGE</li> <li>SMALL PARK (IF STATE OR COUNTY)</li> <li>FOREST RANGER STATION</li> <li>OBSERVATION OR LOOKOUT TOWER</li> <li>PROMINENT PEAK AND LOOKOUT TOWER</li> <li>FISH HATCHERY-BARRI</li> <li>FISH HATCHERY-POND</li> <li>GAME PRESERVE</li> <li>GOLF COURSE OR COUNTRY CLUB</li> <li>YACHT CLUB OR MARINA</li> <li>AMUSEMENT PARK OR MALL</li> <li>FAIRGROUND, RACE TRACK OR SPEEDWAY</li> <li>DRIVE-IN THEATER</li> <li>HISTORIC SITE OR RUIN</li> <li>COVERED BRIDGE</li> <li>LIFE SAIVING STATION</li> <li>COAST GUARD STATION</li> <li>CAMP FARE</li> <li>RAIL TO TRAILS-BIKING, HIKING</li> <li>HORSEBACK RIDING AND SKATING</li> </ul> | <p><b>RAILROADS</b></p> <ul style="list-style-type: none"> <li>RAILROAD IN JUNCTION</li> <li>RAILROAD STATION</li> <li>GRADE CROSSING</li> <li>RAILROAD BRIDGE</li> <li>RAILROAD TUNNEL</li> <li>RAILROAD TURN</li> <li>ABANDONED RAILROAD</li> </ul> <p><b>HIGHWAY BRIDGES</b></p> <ul style="list-style-type: none"> <li>DRY BRIDGE</li> <li>ARCH BRIDGE</li> <li>TRUSS OR GIRDER (STEEL) WOOD</li> <li>CANTILEVER BRIDGE</li> <li>HIGHWAY GRADE SEPARATION</li> </ul> <p><b>AIRPORTS</b></p> <ul style="list-style-type: none"> <li>AIRPORT-GENERAL</li> <li>AIRPORT-COMPLEATE FACILITIES</li> <li>AIRPORT-LIMITED FACILITIES</li> <li>HELIPORT</li> <li>LANDING AREA OR STRIP</li> </ul> <p><b>INDUSTRIAL</b></p> <ul style="list-style-type: none"> <li>MINE SHAFT OR DIAPHR</li> <li>MINE OPENING</li> <li>OIL OR GAS WELD</li> <li>STORAGE TANKS</li> <li>PUMPING STATION-OIL OR GAS</li> <li>GASOLINE OR PUMPING STATION</li> </ul> <p><b>DRAINAGE AND NATURAL FEATURES</b></p> <ul style="list-style-type: none"> <li>INTERMITTENT STREAM</li> <li>TOWNSHIP LINE</li> <li>WIDE STREAM-DAM</li> <li>LAKE RESERVOIR OR POND</li> <li>MARSH OR SWAMP</li> <li>OVERFLOW LAND</li> <li>MOUNTAIN RANGE</li> <li>SINK</li> </ul> <p><b>CHURCHES, CEMETRIES, ETC.</b></p> <ul style="list-style-type: none"> <li>CHURCH</li> <li>CHURCH AND SCHOOL</li> <li>CEMETERY</li> <li>CHURCH AND CEMETERY</li> <li>MURDER OR HOOT HOME</li> <li>HOSPITAL</li> </ul> <p><b>EDUCATIONAL AND CORRECTIONAL</b></p> <ul style="list-style-type: none"> <li>SCHOOLHOUSE</li> <li>OTHER EDUCATIONAL INSTITUTIONS</li> <li>TOYS HALL OR COMMUNITY CENTER</li> <li>AGRICULTURAL EXPERIMENT STATION</li> <li>PRISON OR CORRECTIONAL INSTITUTION</li> </ul> <p><b>BOUNDARIES</b></p> <ul style="list-style-type: none"> <li>STATE BOUNDARY</li> <li>COUNTY BOUNDARY</li> <li>INCORPORATED CITY BOUNDARY</li> <li>TOWNSHIP LINE</li> <li>SECTION LINE</li> <li>LAND GRANT LINE</li> <li>WILDLIFE MANAGEMENT AREA</li> <li>NATIONAL ANTIDOTE FOREST BOUNDARY</li> <li>STATE PARK BOUNDARY</li> <li>MILITARY RESERVATION BOUNDARY</li> </ul> <p><b>MISCELLANEOUS</b></p> <ul style="list-style-type: none"> <li>ARMORY</li> <li>ARSENAL</li> <li>LANDFILL</li> <li>SCRAP METAL YARD</li> <li>AUTOMOBILE YARD</li> <li>SEWAGE DISPOSAL PLANT</li> <li>REST AREA OR WELCOME CENTER</li> <li>TRIANGULATION STATION</li> <li>GPS STATION</li> <li>TRIANGULATION GPS STATION</li> <li>BM-GPS STATION</li> <li>BENCH MARK WITH ELEVATION</li> <li>DOT INDICATES ACTUAL LOCATION OF FEATURE WHERE SPACE IS NOT AVAILABLE</li> </ul> |
|---|---|

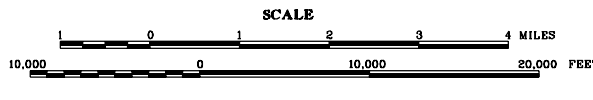
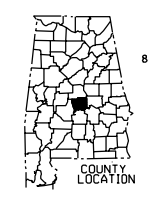


## GENERAL HIGHWAY MAP AUTAUGA COUNTY ALABAMA

PREPARED BY THE  
ALABAMA DEPARTMENT OF TRANSPORTATION  
BUREAU OF TRANSPORTATION PLANNING  
MODAL PROGRAMS  
SURVEYING AND MAPPING DIVISION  
IN COOPERATION WITH  
U.S. DEPARTMENT OF TRANSPORTATION  
FEDERAL HIGHWAY ADMINISTRATION

2011

Control by NATIONAL DEPARTMENT AND ALABAMA DEPARTMENT OF TRANSPORTATION  
Transverse Mercator Projection, 1983 North American Datum, 10,000 foot grid based on Alabama (NAD 83) rectangular coordinate system.  
Compiled by photogrammetric methods from aerial photographs taken 2006. Field examination 2009.  
Prepared and plotted from the computer-processed digital data.



COPIES OF THIS MAP ARE AVAILABLE TO THE PUBLIC AT NOMINAL COST AT THE ALABAMA DEPARTMENT OF TRANSPORTATION MAP SALES OFFICE  
1409 COLISEUM BOULEVARD  
MONTGOMERY, ALABAMA 36102  
NOTE: THESE COPIES ARE NOT FOR RESALE IN EXCESS OF THE ACTUAL COPIES BY THE DEPARTMENT

CITY, MILITARY AND OTHER RELATED BOUNDARIES ARE PLOTTED USING ALL AVAILABLE DESCRIPTIONS AND ITS AFFILIATES ASSUME NO RESPONSIBILITY FOR INACCURACIES IN ROAD ALIGNMENTS, CONFIGURATION OF INTERSECTIONS, AND OTHER RELATED DATA.

THE ALABAMA DEPARTMENT OF TRANSPORTATION AND ITS AFFILIATES DO NOT SPECIFY OWNERSHIP OR MAINTENANCE OF ANY ROADS OR OTHER FEATURES DEPICTED ON THIS MAP.